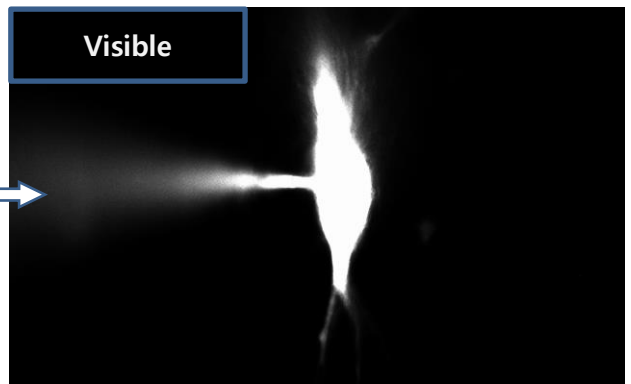
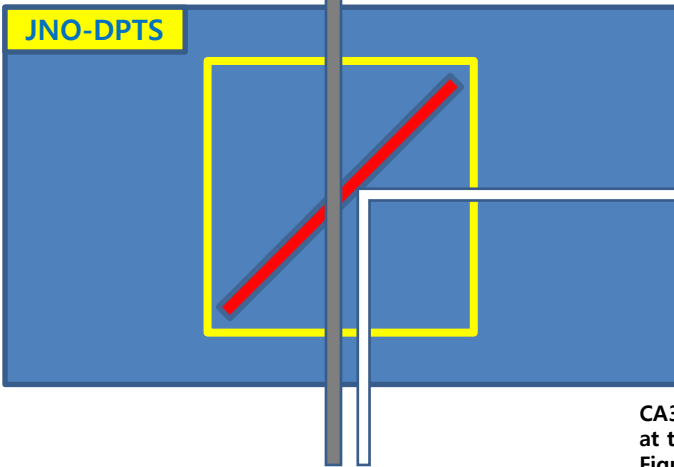
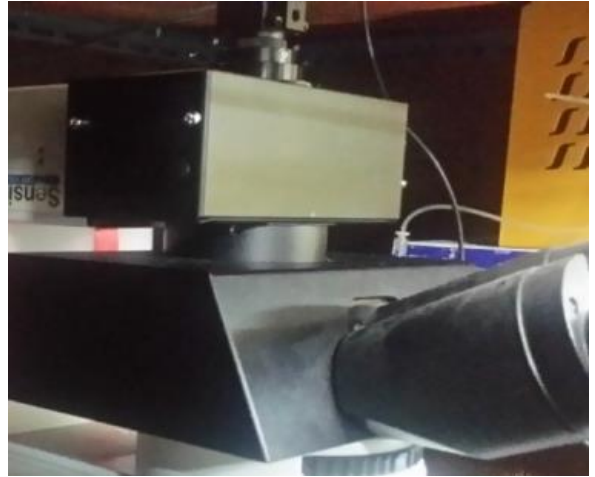
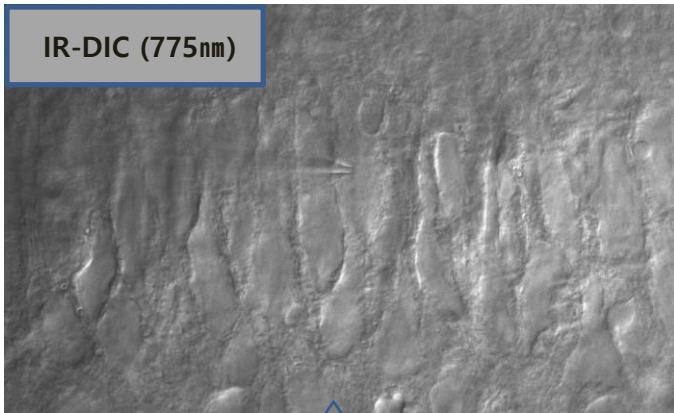


Multi Dual Port Imaging System

IR DIC(775)	Simultaneously observation
Fluorescence	



CA3 pyramidal neuron - Observation IR DIC Image & Alexa Fluor 488 at the same time with BX51-WI, JNO-DPTS, AcquCAM 23S
 Figure courtesy by Dr. Sooyun Kim, Seoul National University

Frame Rate	162 fps, increased through ROI
Sensor	1 / 1.2 inch (1920x1200, 5.86 μ m x 5.86 μ m)
FILTER	JNO-RemN/B (Noisy cut filter)
Manification	1x, 1.25x, 1.6x, 2x